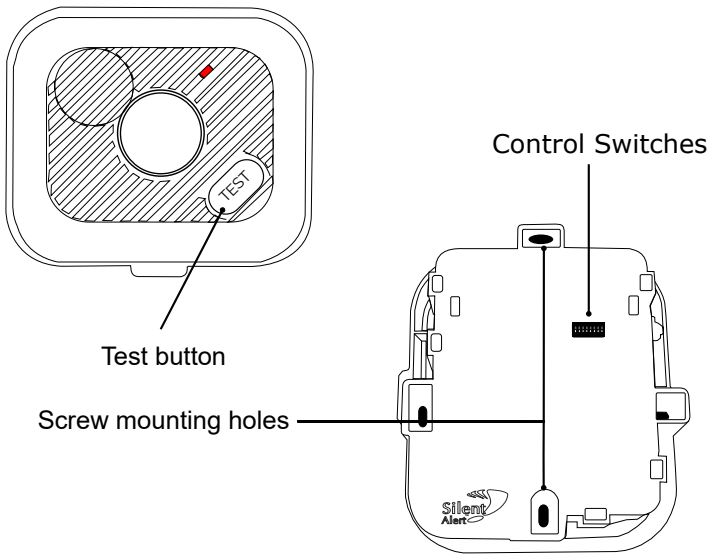


Quick start guide UM3A-HEAT-DETECTOR

Wireless heat detector



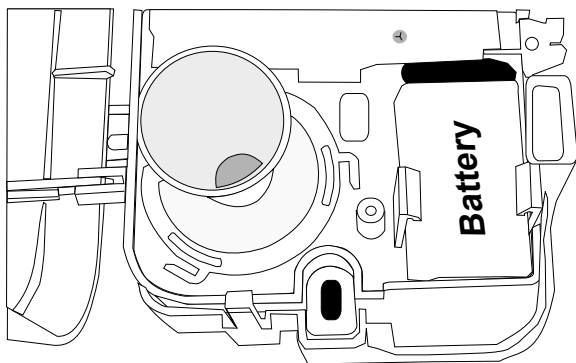
Any questions? Call us on 01246 450789



Silent Alert SA3000 system
Operating Frequency: **869MHz**
Output power: **<10mW**
Hereby, Clofield Ltd declares this radio equipment is in compliance with Directive 2014/53/EU.
The full text of the EU declaration can be found at www.silent-alert.co.uk

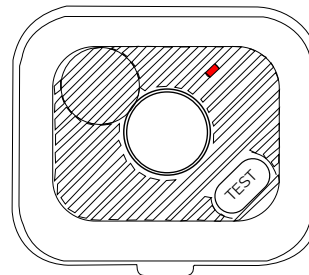
UK CA CE

1.



Install a 9V PP3 battery into the unit.
NOTE: Only use alkaline or lithium batteries.

2.



Press the heat detector test button whilst holding the alarm in the desired location.

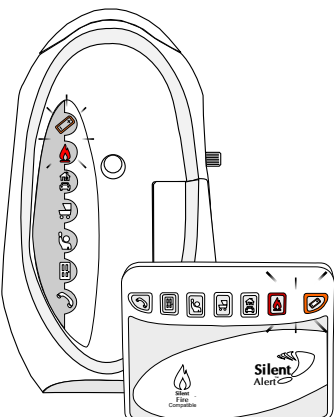
Refer to the separate EI instructions for the heat detector to determine the best position for the unit.

Check the Pager or SignWave has received the signal before fixing in place.

3.

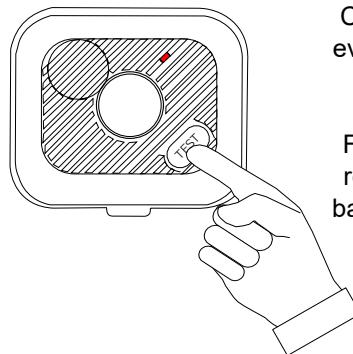
An Alkaline battery should last 2 years or more, a lithium battery can last 5 - 10.

Low battery signals will be sent to your Pager or SignWave when the battery needs changing.



4.

Push the button not your luck



Check your smoke alarms every week by pressing the test button.

For extra reassurance we recommend changing the battery once a year on your birthday or a similar memorable date.

Only replace the battery with an Alkaline or Lithium PP3 battery



Advanced settings UM3A-HEAT-DETECTOR

Wireless heat detector

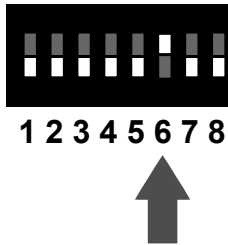


Any questions? Call us on 01246 450789

System channel override

Key 6 is for system channel override. If it is set, all SignWave and Pager units within range will activate when the heat detector triggers regardless of what system channel they are on.

This can be used in multi occupancy dwellings where a number of systems are working independently of each other but it is beneficial to have communal heat detector cover.



Changing the system channel code

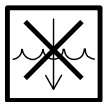
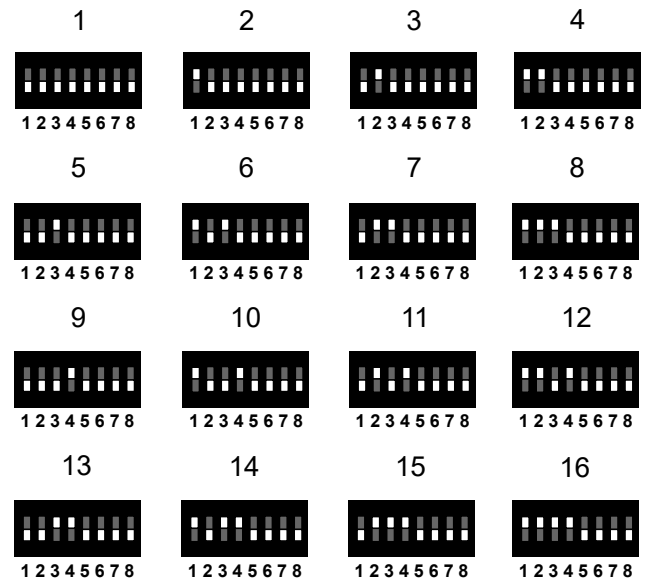
NOTE. In most cases it is not necessary to change the system code. However, when one or more systems are in close proximity, system codes can be used to avoid interference from other Silent Alert systems using up to a maximum of 16 system channels.

The monitor is supplied with no system code switches set (system code 1). For reference this is the factory setting should you need to re-set the unit.

System codes can be set using key switches 1 - 4.

The diagram to the right shows the 16 possible combinations.

Be sure that the same system code is set on the receiver to be used and any other monitors in that system.



Do not immerse the Heat Alarm in water or any other liquid.



Do not disassemble.



WARNING! Your device and its accessories are not toys. They may contain small parts. Keep them out of the reach of small children.